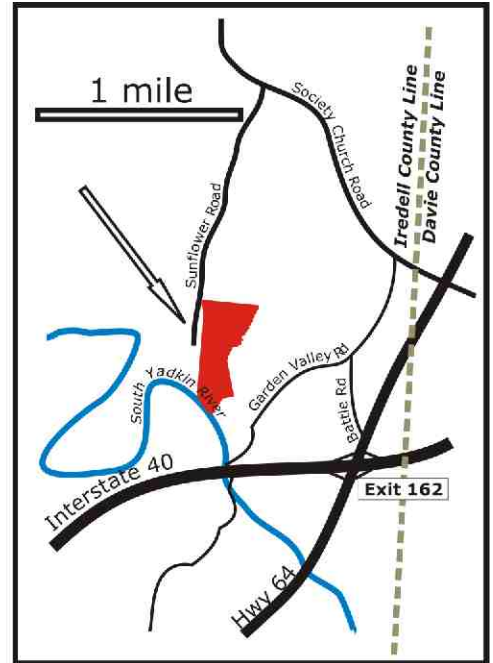
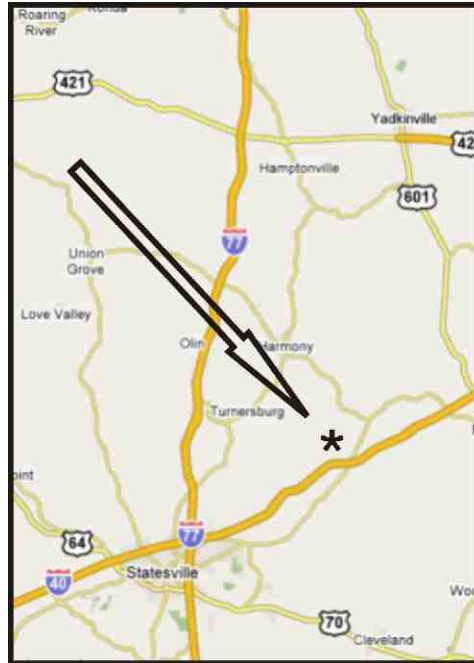


# Land For Sale • \$512,131 (\$8,200/acre)

62.455 acres +/- • Sunflower Road • Iredell County, NC



## Property Features:

- 500+/- feet of River Frontage
- Covered in mixed hardwood/pine
- 10 minutes from Statesville
- 30 minutes from Winston Salem
- Abundant wildlife
- Secluded
- Recent survey available



For more information contact:

**Tim Cartner**

T. 704.996.0380

tim@thelandcompanyllc.com

The Land Company, LLC  
156 East Main Street  
Suite 3  
Rock Hill, SC 29730

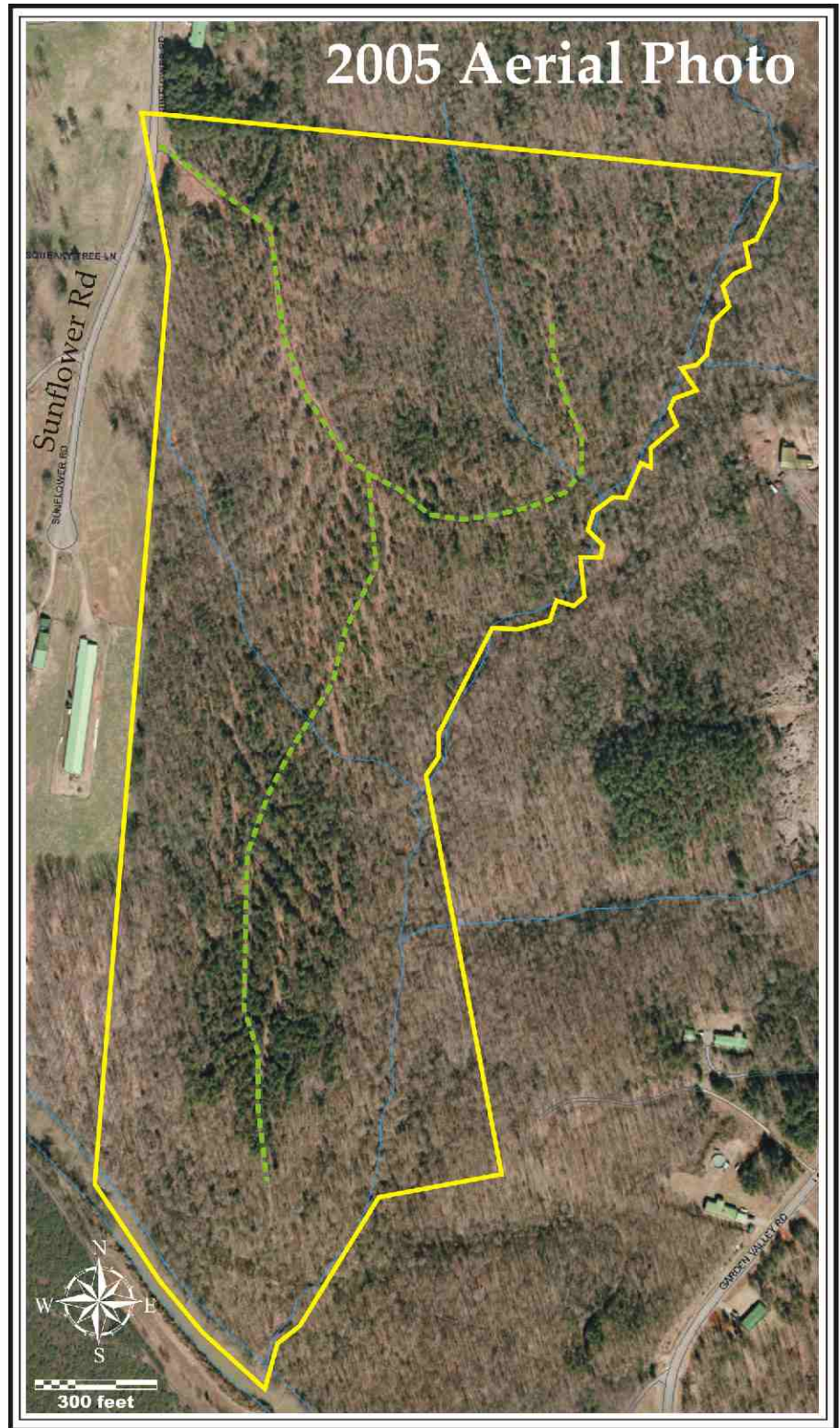
www.thelandcompanyllc.com

**THE LAND**  
  
**COMPANY, LLC**  
Real Estate Brokerage Services

*Disclaimer: The information provided herein is deemed reliable, but is not guaranteed in any way. It is the responsibility of the buyer to perform his or her own evaluation.*

# Land For Sale • \$512,131 (\$8,200/acre)

62.455 acres +/- • Sunflower Road • Iredell County, NC



For more information contact:

**Tim Cartner**

T. 704.996.0380

tim@thelandcompanyllc.com

The Land Company, LLC

156 East Main Street

Suite 3

Rock Hill, SC 29730

www.thelandcompanyllc.com

**THE LAND**



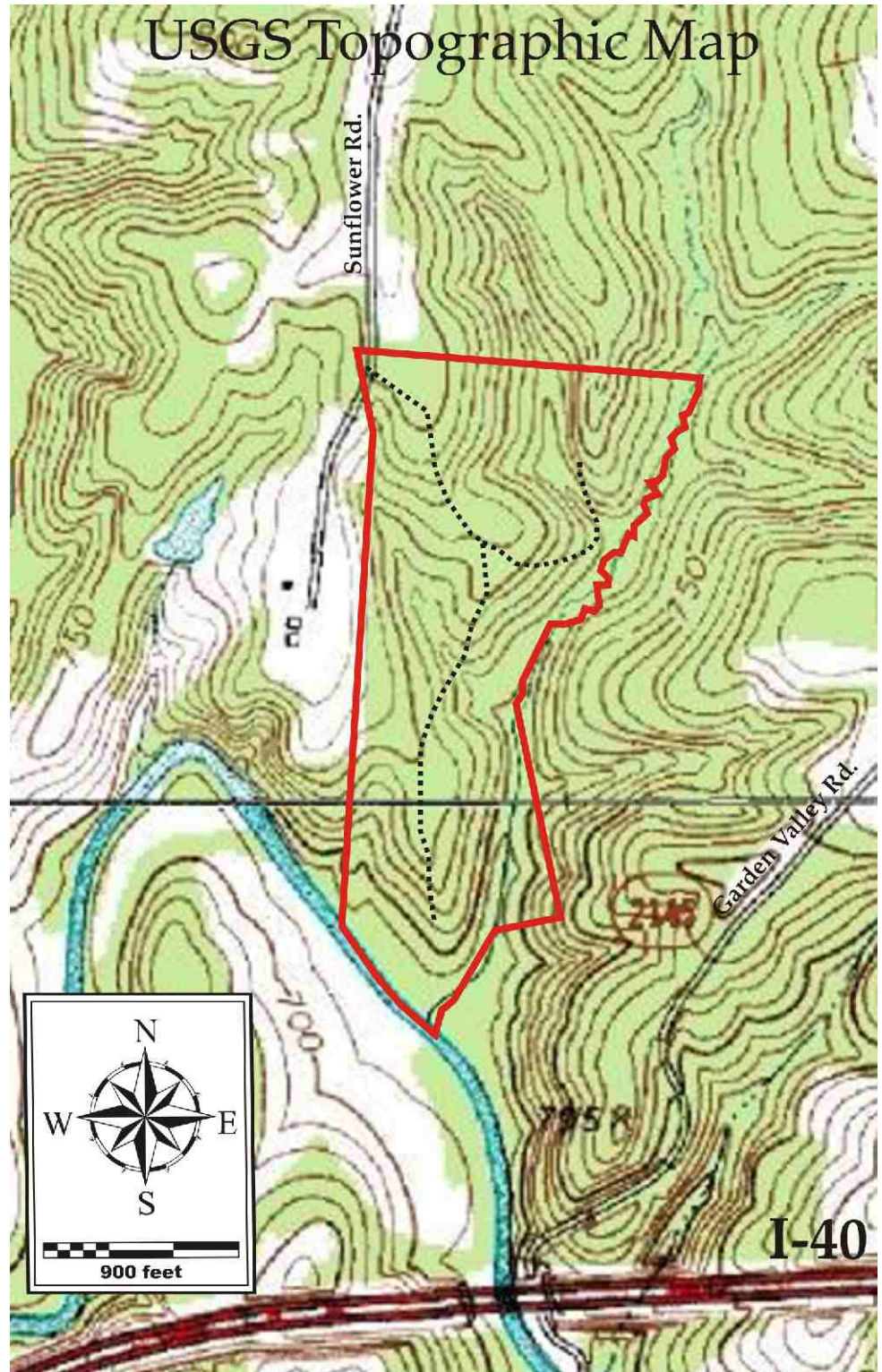
**COMPANY, LLC**

Real Estate Brokerage Services

*Disclaimer: The information provided herein is deemed reliable, but is not guaranteed in any way. It is the responsibility of the buyer to perform his or her own evaluation.*

# Land For Sale • \$512,131 (\$8,200/acre)

62.455 acres +/- • Sunflower Road • Iredell County, NC



For more information contact:

**Tim Cartner**

T. 704.996.0380

tim@thelandcompanyllc.com

The Land Company, LLC

156 East Main Street

Suite 3

Rock Hill, SC 29730

www.thelandcompanyllc.com

THE LAND



COMPANY, LLC

Real Estate Brokerage Services

*Disclaimer: The information provided herein is deemed reliable, but is not guaranteed in any way. It is the responsibility of the buyer to perform his or her own evaluation.*